



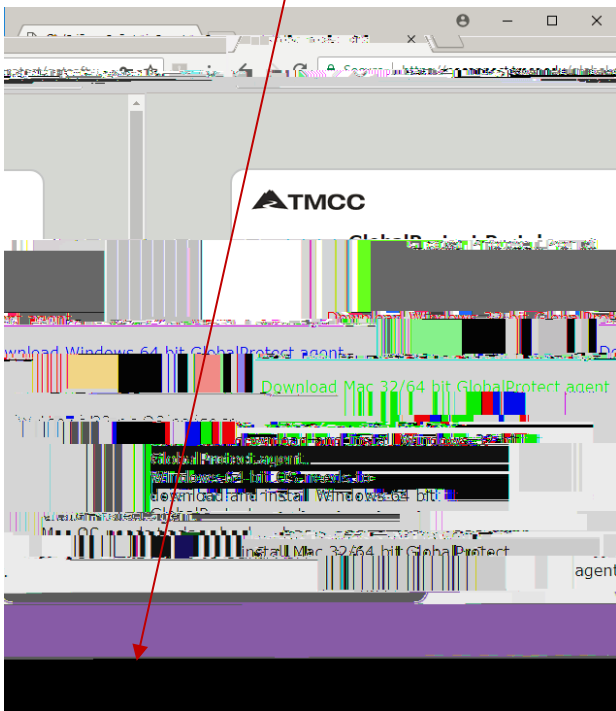
# WINDOWS 10 VPN VISUAL AID

Complete instructions for installing and connecting to the Virtual Private Network (VPN) portal, accessing GlobalProtect offsite, and remote network access (accessing files stored on the administrative file server) are available online (<http://it.tmcc.edu>).

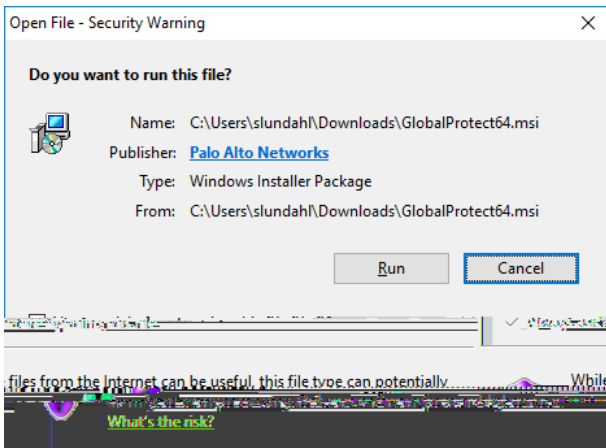
Please contact TMCC Information Technology if you require assistance.

## Instructions for Windows 10 with Visual Aids

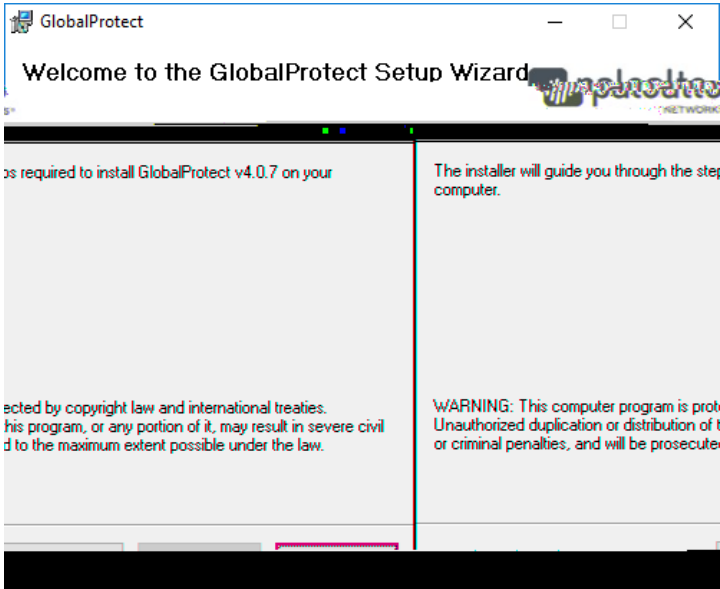
To install, click on the "GlobalProtect64.msi" install, located on the bottom left corner of the GlobalProtect Portal screen.



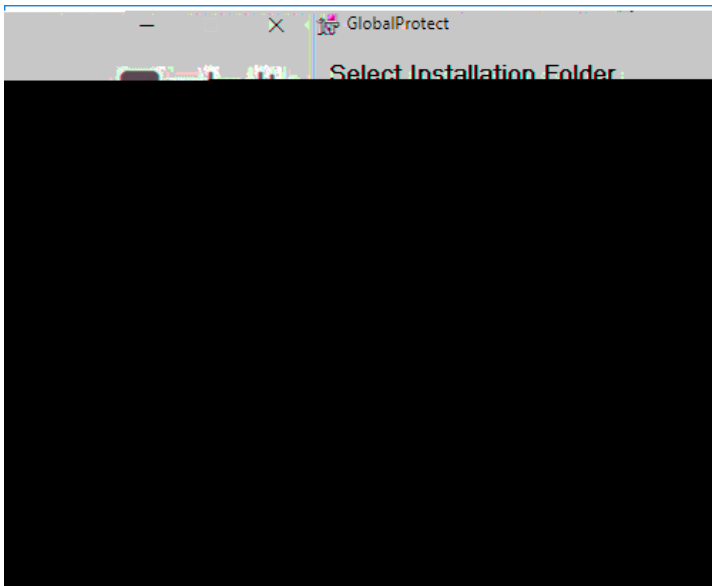
Click "Run" .



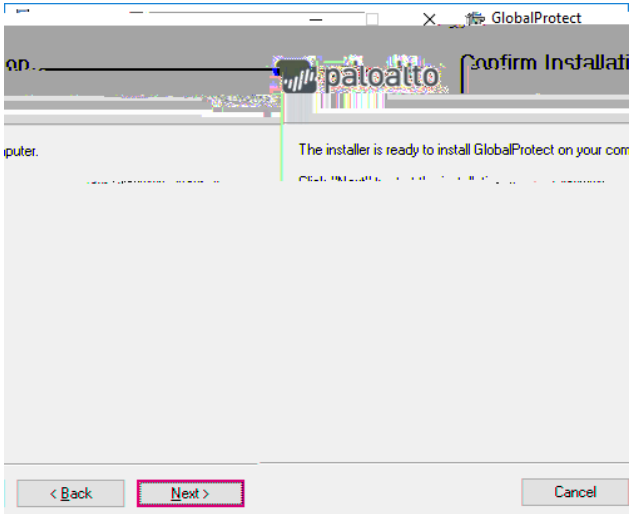
The "Welcome to the GlobalProtect Setup Wizard" screen will appear. Click "Next"



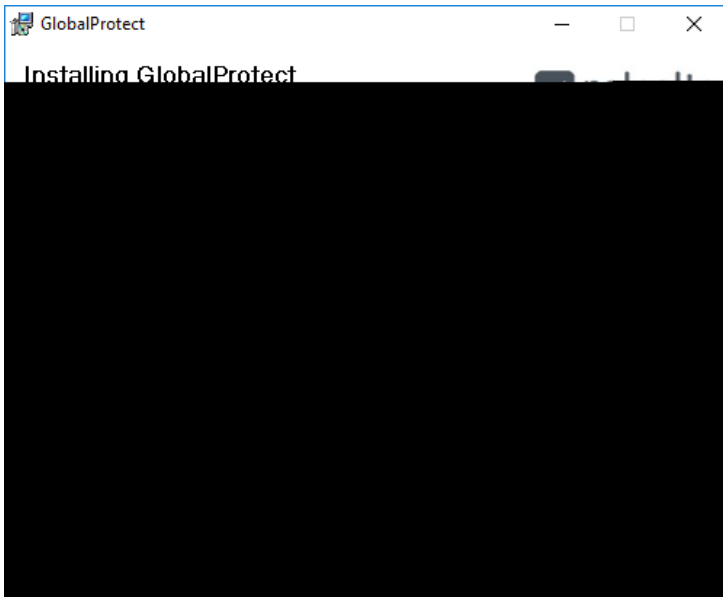
On the "Select Installation Folder" click "Next"



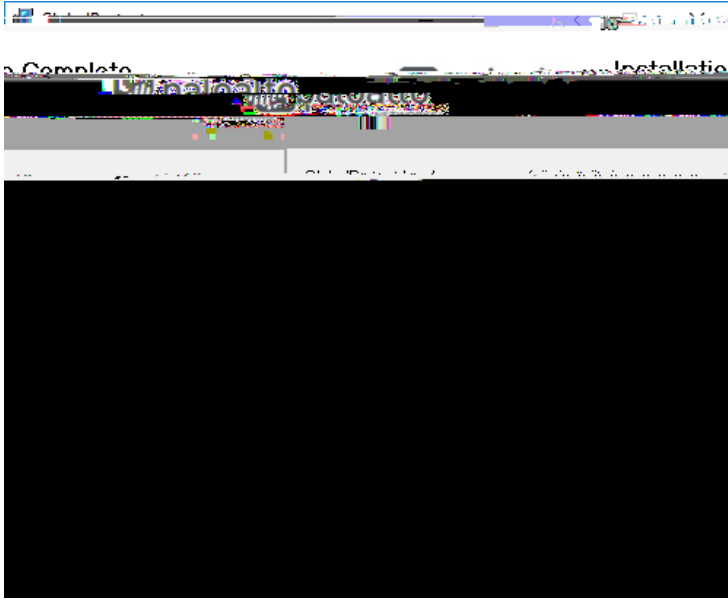
On "Confirm Installation" click "Next"



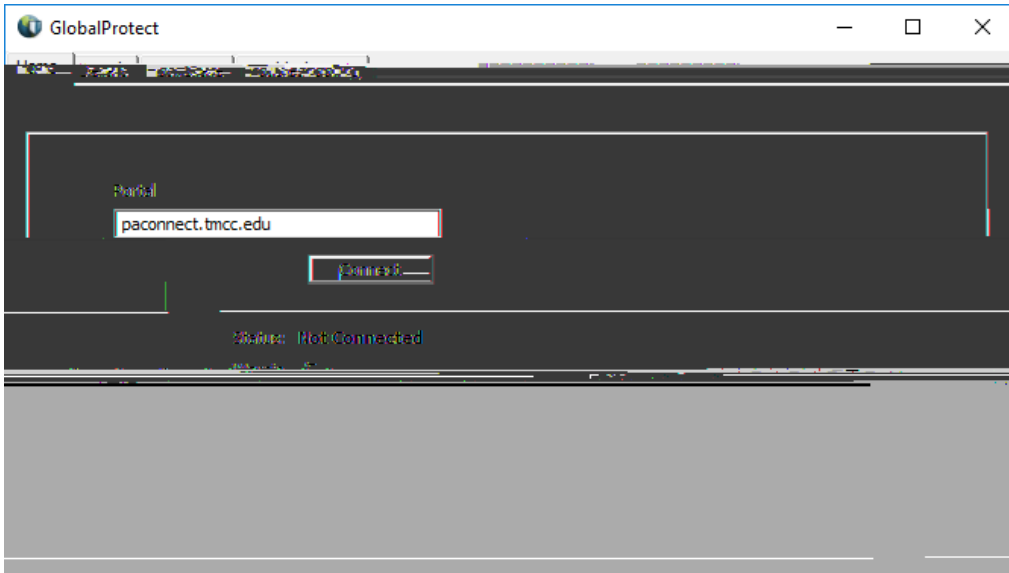
The "Installing GlobalProtect" screen will appear.



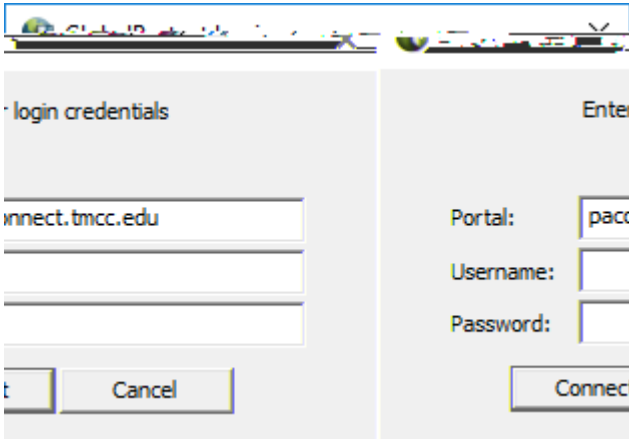
When installation is complete, click "Close"



The "GlobalProtect" screen appears. Type "paconnect.tmcc.edu" in the address line under "Portal" and click "Connect"

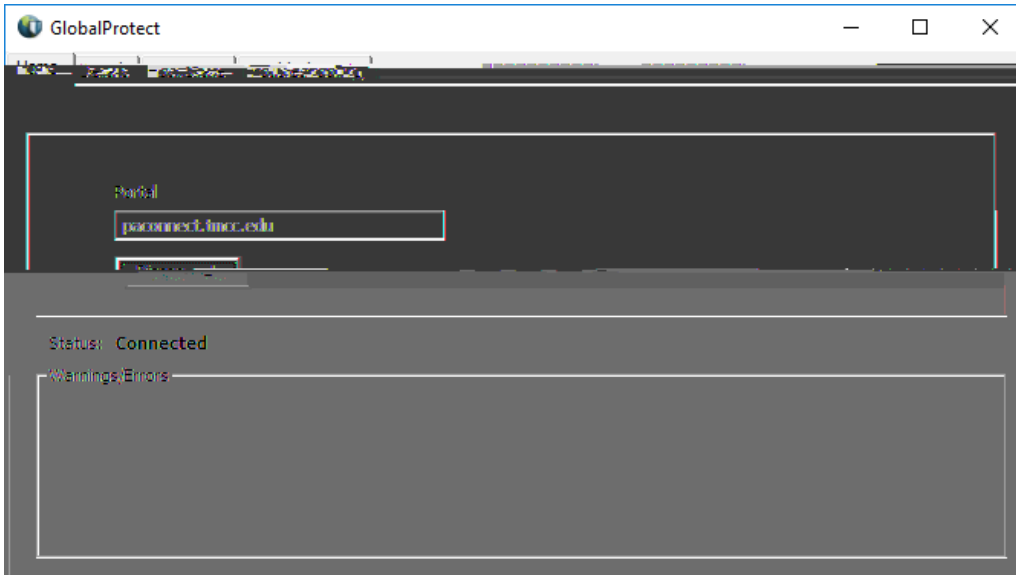


On the "GlobalProtect Login" screen, enter your TMCC network login credentials and click "Connect"



Congratulations! You have established a VPN connection!

Close this window.



Note: You will not need to follow these steps in the future on this machine.

